

INDOFINE Chemical Company, Inc.

121 Stryker Lane, Bldg. 30, Suite 1 • Hillsborough, NJ 08844 • U.S.A.

Phone: (908) 359-6778 • FAX: (908) 359-1179

website: www.indofinechemical.com

e-mail: chemical@indofinechemical.com

CERTIFICATE OF ANALYSIS

Catalog Number: C-003

Product Name: **CONESSINE**
(Nerine, Roquessine, Wrightine)

Cas Number: [546-06-5]

Lot Number: 1507628

Chemical Formula: C₂₄H₄₀N₂

Molecular Weight: 356.59

Melting Point: 118-120°C

Source: From Holarrhena antidysentrica seeds

Appearance: White powder

TLC: Chloroform : methanol (9:1)

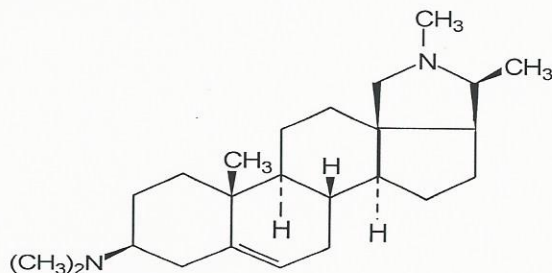
Solubility: Soluble in chloroform

Storage: Store in a cool, dry place. Protect from light.

NMR Spectrum: Enclosed (conforms to the structure)

Moisture (KF) 0.44%

Purity(HPLC): 99.24%





INDOFINE Chemical Company, Inc.

121 Stryker Lane, Bldg. 30, Suite 1 • Hillsborough, NJ 08844 • U.S.A.

Phone: (908) 359-6778 • FAX: (908) 359-1179

website: www.indofinechemical.com

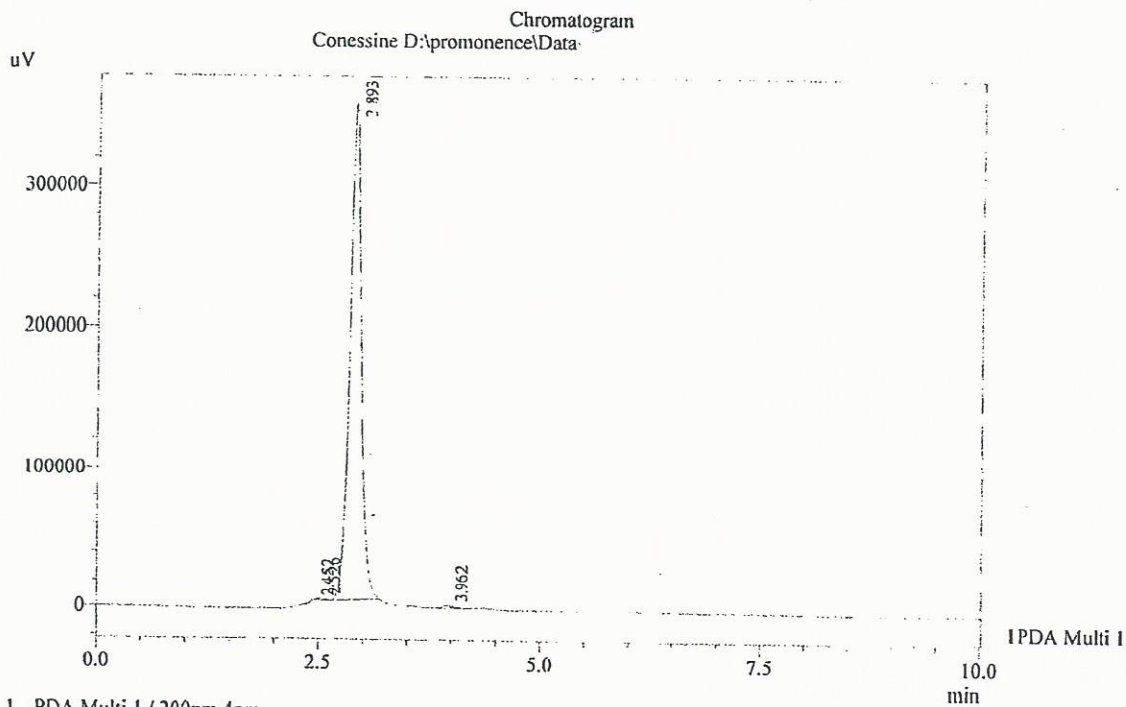
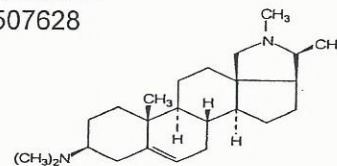
e-mail: chemical@indofinechemical.com

HPLC ANALYSIS

Acquired by : Admin
Sample Name : Conessine
Injection Volume : 20 uL
Data Filename : 200715G.lcd
Method Filename : Linear Isocratic.M lcm

Catalog No.: C-003
Product Name: Conessine
Lot No.: 1507628

Column : LUNA C-18(2), (250mm x4.6mm 5.0μ)
Flow : 1.000 mL/min.
Mobile Phase : A(50% of 0.1% Perchloric acid in water) B(50% of Acetonitrile)



PDA Ch1 200nm 4nm

PeakTable

Peak#	Name	Ret. Time	Area	Area %	Relative Retention Time
1	RT:2.452	2.452	6233	0.20	0.85
2	RT:2.526	2.526	5436	0.17	0.87
3	Conessine	2.893	3164013	99.24	1.00
4	RT:3.962	3.962	12596	0.40	1.37
Total			3188279	100.00	



INDOFINE Chemical Company, Inc.

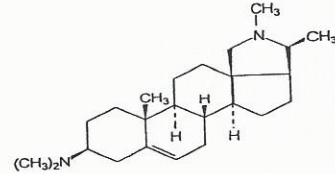
121 Stryker Lane, Bldg. 30, Suite 1 • Hillsborough, NJ 08844 • U.S.A.

Phone: (908) 359-6778 • FAX: (908) 359-1179

website: www.indofinechemical.com

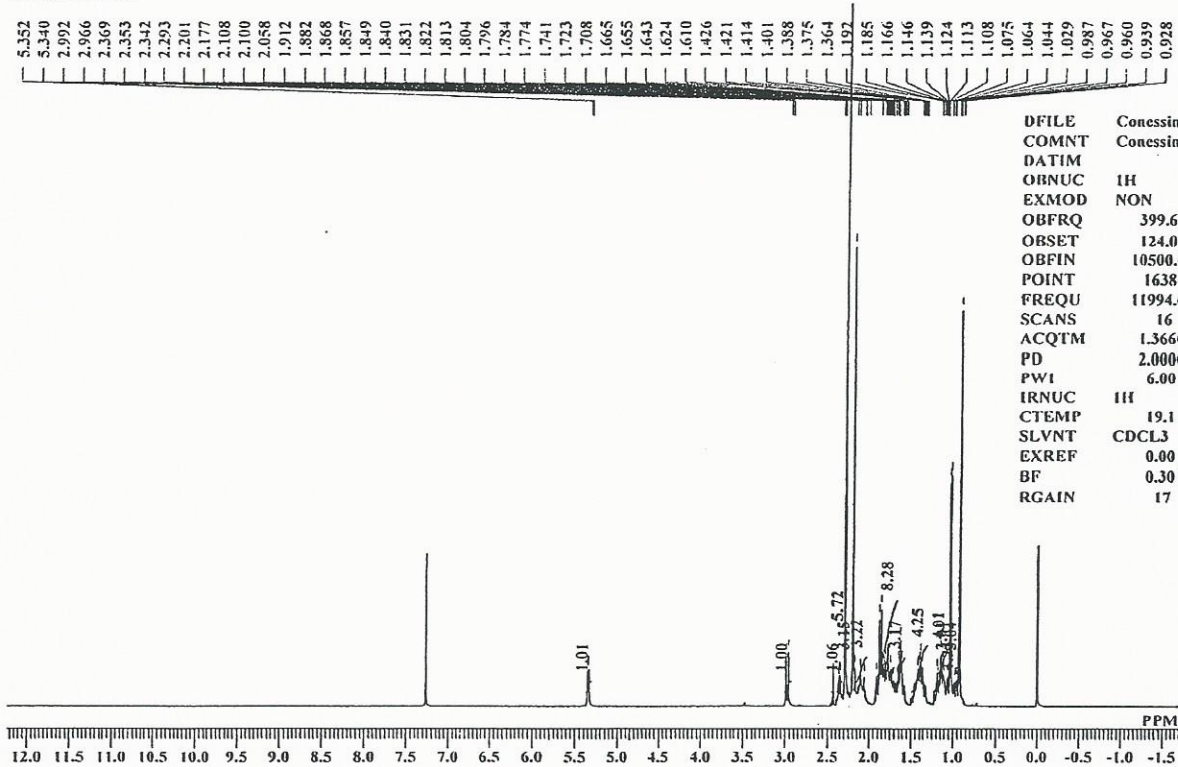
e-mail: chemical@indofinechemical.com

Catalog No.: C-003
Product Name: Conessine
Lot No.: 1507628



Conessine Lot 1H NMR CDCl3

Analysed By: GRJ



DFILE	Conessine	Lot 1H.als
COMNT	Conessine	Lot 1H NMR CD
DATIM		
OBNUC	1H	
EXMOD	NON	
OBFRQ	399.65 MHz	
OBSET	124.00 KHz	
OBFIN	10500.00 Hz	
POINT	16384	
FREQU	11994.00 Hz	
SCANS	16	
ACQTM	1.3660 sec	
PD	2.0000 sec	
PWI	6.00 usec	
IRNUC	1H	
CTEMP	19.1 c	
SLVNT	CDCl3	
EXREF	0.00 ppm	
BF	0.30 Hz	
RGAIN	17	

ICG **INDOFINE Chemical Company, Inc.**

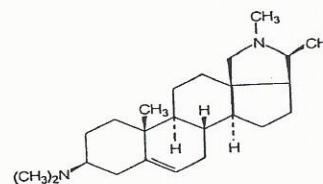
121 Stryker Lane, Bldg. 30, Suite 1 • Hillsborough, NJ 08844 • U.S.A.

Phone: (908) 359-6778 • FAX: (908) 359-1179

website: www.indofinechemical.com

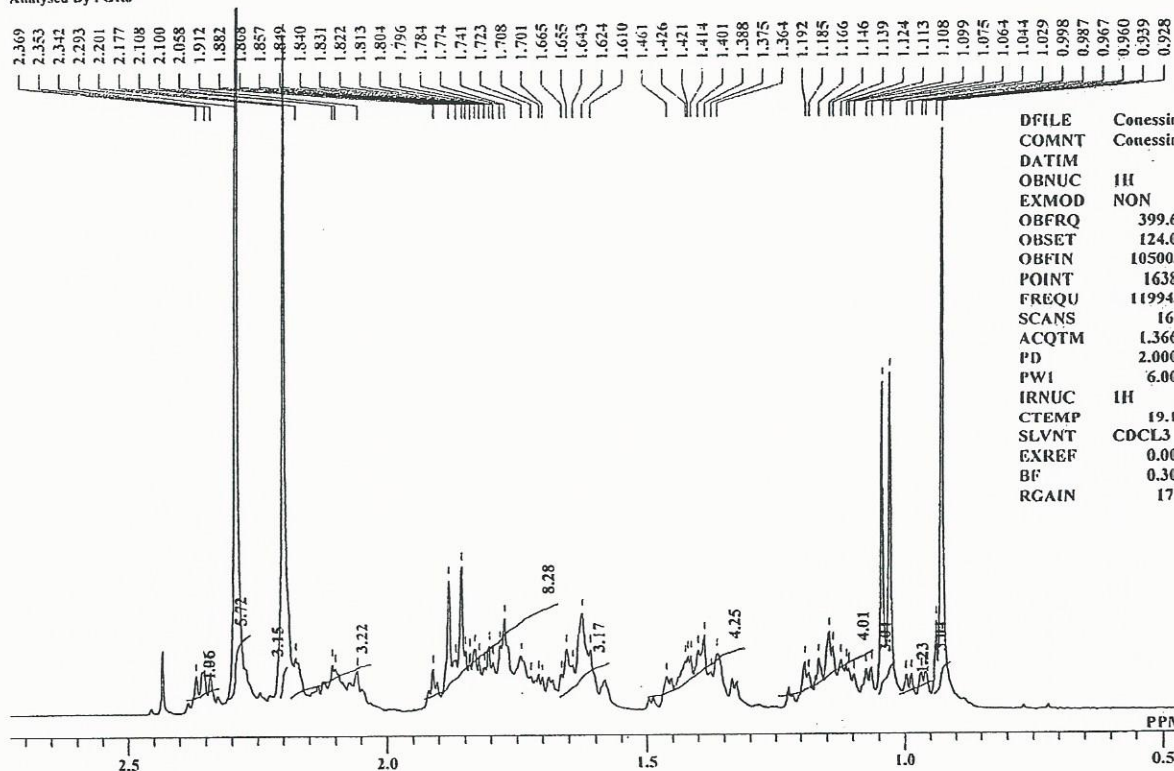
e-mail: chemical@indofinechemical.com

Catalog No.: C-003
Product Name: Conessine
Lot No.: 1507628



Conessine (1) Lot 1H NMR CDCL3

Analysed By: GRJ



DFILE	Conessine	Lot 11Lals
COMNT	Conessine	Lot 11H NMR CD
DATIM		
OBNUC	1H	
EXMOD	NON	
OBFRQ	399.65 MHz	
OBSET	124.00 KHz	
OBFIN	10500.00 Hz	
POINT	16384	
FREQU	11994.00 Hz	
SCANS	16	
ACQTM	1.3660 sec	
PD	2.0000 sec	
PWI	6.00 usec	
IRNUC	1H	
CTEMP	19.1 c	
SLVNT	CDCL3	
EXREF	0.00 ppm	
BF	0.30 Hz	
RGAIN	17	



INDOFINE Chemical Company, Inc.

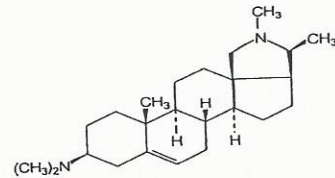
121 Stryker Lane, Bldg. 30, Suite 1 • Hillsborough, NJ 08844 • U.S.A.

Phone: (908) 359-6778 • FAX: (908) 359-1179

website: www.indofinechemical.com

e-mail: chemical@indofinechemical.com

Catalog No.: C-003
Product Name: Conessine
Lot No.: 1507628



Conessine Lot 1H NMR CDCl3
Analysed By: GRJ



DFILE	Conessine	Lot 1H.als
COMNT	Conessine	Lot 1H NMR CD
OBNUC	1H	
EXMOD	NON	
OBFRQ	399.65 MHz	
OBSET	124.00 KHz	
OBFIN	10500.00 Hz	
POINT	16384	
FREQU	11994.00 Hz	
SCANS	16	
ACQTM	1.3660 sec	
PD	2.0000 sec	
PWI	6.00 usec	
IRNUC	1H	
CTEMP	19.1 c	
SLVNT	CDCL3	
EXREF	0.00 ppm	
BF	0.30 Hz	
RGAIN	17	

